

A NEW SPECIES OF THE GENUS *BOSMINOPSIS* RICHARD, 1895
(CRUSTACEA: CLADOCERA: BOSMINIDAE) FROM INDIA¹

PRAMOD RANE²

(With three text-figures)

The Cladocera of family Bosminidae are little known from India, and the genus *Bosminopsis* has not been reported from the Indian sub-continent. While studying the Cladoceran fauna of Madhya Pradesh, I came across a new species of the genus *Bosminopsis* which is described here.

***Bosminopsis devendrai* sp. nov.**

Material: 1 ♀ (Holotype) and 3 ♀♀ (Paratypes) Location: Pariat tank on Amerkantak road, Jabalpur district, Madhya Pradesh, India, Coll.: P. D. Rane.

Date of collection: 27 August 1977.

The types are on slides and are in the National Zoological Collection, Zoological Survey of India. (Holotype No. C 3115/2 and Paratype No. C 3116/2).

DESCRIPTION

Body hyaline, valves thin, reticulate with polygonal cells. Infrapostoral angle with large spine which is in between two rather small spines, ventro-posterior side of the valve with 4-6 denticles. Basal part of the antennules united with each other and with head to form sinuate posterior margin. One large spine near apex with several olfactory setae. Antenna with three jointed rami. Post-abdomen with

sinuate posterior margin. One large spine near claws, more than half the length of post-abdominal claw. The anterior lobe of the post-abdomen with about four, and posterior with about 7, minute spinules. Eye usually large, situated dorsally. Postero-dorsal corner of valve slightly protrudes out. Intestine not coiled, anus terminal. Male unknown. Length of female: 0.28-0.33 mm.

AFFINITIES

The new species *Bosminopsis devendrai* appears to be similar to the only species known under the genus namely, *B. deitersi* Richard, 1895; but can be separated from it as follows:-

1. Post-abdomen of *Bosminopsis deitersi* Richard tapering to point at claws, while in *B. devendrai* it is sinuate.

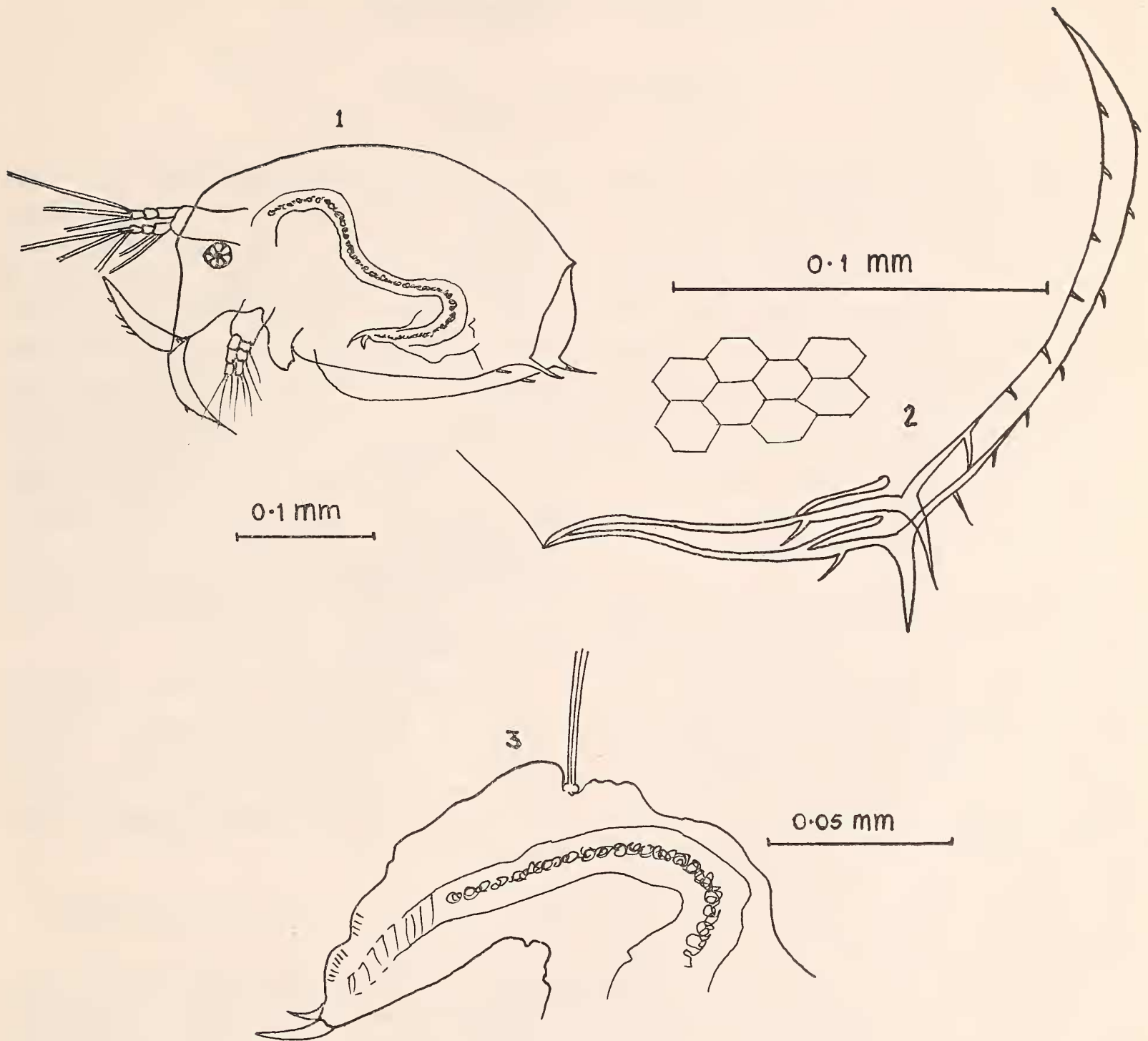
2. Postero-dorsal corner of valve somewhat protruding out in *Bosminopsis devendrai*, while it does not protrude out in the other species.

3. The large spine on infero-lateral angle is in between two rather small spines in *Bosminopsis devendrai*, while in *B. deitersi* only one small spine is present at the proximal side of the large spine. The large spine is comparatively larger in *B. devendrai* than in *B. deitersi*. In addition to the above mentioned differences, the ventral margin of valve with 4-6 small spines is a unique character for the new species.

¹ Accepted June 1983.

² Zoological Survey of India, Central Regional Station, Jabalpur, Madhya Pradesh, 482 002.

NEW DESCRIPTIONS



Figs. 1-3. *Bosminopsis devendrai* sp. nov.

1. Parthenogenetic female; 2. Infero-postal angle of valve showing large spine between two rather small spines and six denticles; 3. Post-abdomen.

REFERENCES

BROOKS, J. L. (1959): Cladocera: In Fresh Water Biology, Edited by W. T. Edmonson: 2nd Edition, John Wiley and Sons. New York: 587-656.

RICHARD, J. (1895): Sur quelques Entomostracés d'eau douce d'Haiti. *Mem. Soc. Zool. France*, VIII. (2): 189-199.